

RESEARCH

Open Access

5-HT_{1A} gene promoter polymorphism and [¹⁸F]MPPF binding potential in healthy subjects: a PET study

Amélie Lothe^{*1,2}, Claudette Boni³, Nicolas Costes⁴, Sandrine Bouvard¹, Philip Gorwood³, Franck Lavenne⁴, Marion Alvarez⁴ and Philippe Ryvlin^{1,2,5}

Abstract

Background: Previous Positron Emission Tomography (PET) studies of 5-HT_{1A} receptors have shown an influence of several genetic factors, including the triallelic serotonin transporter gene-linked polymorphic region on the binding potential (BP_{ND}) of these receptors. The aim of our study was to investigate the relationship between a 5-HT_{1A} promoter polymorphism and the binding potential of another selective 5-HT_{1A} receptor antagonist, [¹⁸F]MPPF, in healthy subjects.

Methods: Thirty-five volunteers, including 23 women, underwent an [¹⁸F]MPPF scan and were genotyped for both the C(-1019)G 5-HT_{1A} promoter polymorphism and the triallelic serotonin transporter gene-linked polymorphic region. We used a simplified reference tissue model to generate parametric images of BP_{ND}. Whole brain Statistical Parametric Mapping and raphe nuclei region of interest analyses were performed to look for an association of [¹⁸F]MPPF BP_{ND} with the C(-1019)G 5-HT_{1A} promoter polymorphism.

Results: Among the 35 subjects, 5-HT_{1A} promoter genotypes occurred with the following frequencies: three G/G, twenty-one G/C, and eleven C/C. No difference of [¹⁸F]MPPF BP_{ND} between groups was observed, except for two women who were homozygote carriers for the G allele and showed greater binding potential compared to other age-matched women over the frontal and temporal neocortex. However, the biological relevance of this result remains uncertain due to the very small number of subjects with a G/G genotype. These findings were not modified by excluding individuals carrying the S/S genotype of the serotonin transporter gene-linked polymorphic region.

Conclusions: We failed to observe an association between the C(-1019)G 5-HT_{1A} promoter polymorphism and [¹⁸F]MPPF binding in healthy subjects. However our data suggest that the small number of women homozygote for the G allele might have greater [¹⁸F]MPPF BP_{ND} relative to other individuals. This finding should be confirmed in a larger sample.

Background

The binding potential (BP) of [¹¹C]WAY100635 at 5-HT_{1A} receptors is reported to be influenced by several genetic factors, including the serotonin transporter gene-linked polymorphic region (5-HTTLPR) [1,2]. We have recently evaluated the impact of this polymorphism on the BP of another selective 5-HT_{1A} receptor antagonist,

[¹⁸F]MPPF (4-(2'-methoxyphenyl)-1-[2'-(N-2-pirydynyl)-p-fluorobenzamido]-ethyl-piperazine), given that [¹¹C]WAY100635 and [¹⁸F]MPPF demonstrate several functional differences [3]. [¹⁸F]MPPF is characterized by an affinity for 5-HT_{1A} receptors in rat hippocampal membrane homogenates (K_i = 3.3 nM) which is lower than that for [¹¹C]WAY100635 (K_i = 0.8 nM) [4], and more comparable to that of endogenous serotonin (5-HT) (K_i = 4.17 nM) [5]. Furthermore, in contrast to [¹¹C]WAY100635, [¹⁸F]MPPF is reported to be sensitive

* Correspondence: amelie.lothe@cermep.fr

¹ CTRS-IDEE, Lyon, France

Full list of author information is available at the end of the article

in vivo to the concentration of extracellular 5-HT [6-8]. Accordingly, we previously observed that healthy women homozygote carriers of the S allele of 5-HTTLPR had significantly greater [¹⁸F]MPPF BP than carriers of at least one L_A allele [3].

In the present study, we have extended our research to examine a possible association between C(-1019)G 5-HT_{1A} promoter polymorphism and [¹⁸F]MPPF BP. This polymorphism is located in the regulatory region of the 5-HT_{1A} promoter which inhibits transcriptional repression of the 5-HT_{1A} gene [9,10], and is part of a 26 base pair imperfect palindrome [11]. This palindromic region is recognized by two transcription factors; the nuclear deformed epidermal autoregulatory factor (NUDR, Deaf-1) and Hes5. This recognition occurs in an allele-specific manner, such that these proteins bind to the C allele but not the G allele. The G allele is reported to abolish repression by NUDR in raphe but not hippocampal neuron cultures [11]. Thus, the G allele is supposedly associated with higher expression of 5-HT_{1A} receptors in the raphe nuclei and decreased 5-HT release, consistent with the association reported between G/G genotype and major depression [11,12].

The association of C(-1019)G 5-HT_{1A} promoter polymorphism and 5-HT_{1A} receptor binding has been studied in humans in three [¹¹C]WAY-100 635 PET studies [1,12,13]. One of these studies was performed using a homogenous group of healthy subjects and failed to detect any significant relationship between C(-1019)G 5-HT_{1A} promoter polymorphism and [¹¹C]WAY-100635 BP [1]. The other two studies, performed using a mixed population of depressed and healthy individuals, demonstrated greater BP in the raphe nuclei, the amygdala, and the hippocampus in carriers with at least one G allele compared to the C/C genotype [12,13].

In the present study, we sought to identify possible associations between C(-1019)G 5-HT_{1A} promoter polymorphism and [¹⁸F]MPPF BP in a homogenous group of healthy subjects, and further examined the potential confounding impact of triallelic 5-HTTLPR polymorphism.

Methods

Thirty-five healthy subjects were selected on the basis of (i) no sign or history of neurological, psychiatric, cardiovascular, pleuro-pulmonary or haematological illness, (ii) no ongoing central nervous system (CNS)-active treatment including neuroleptic, antiparkinsonian, methyl-dopa, β -blocker, monoamine oxidase inhibitor-A or -B, tricyclic antidepressant, thymoregulator or antimigraine treatment, (iii) no hormone replacement therapy, and (iv) a score below the threshold for depression (< 7) for the GHQ-28. All subjects gave their informed consent to par-

ticipate in this study, which was approved by the local Ethics committee (CCPPRB, Centre Léon Bérard, Lyon) in accordance with the Declaration of Helsinki and French regulations on Biomedical Research.

Genomic DNA was extracted from endobuccal cell swabs, according to the BuccalAmp DNA Extraction Kit from Epicentre. Allele-specific polymerase chain reaction (PCR) amplification was performed according to the protocol originally described by Hong et al. [14], and enabled us to classify each subject into one of the three following groups: C/C, C/G or G/G. In addition, all subjects were genotyped for the triallelic 5-HTTLPR polymorphism and classified as S/S, S/L_A and L_A/L_A (as reported previously; see [3] for details).

All subjects also underwent a 3-D anatomical T1-weighted sequence on a 1.5-T Siemens Magnetom scanner (Siemens AG, Erlangen, Germany). Data were acquired in the sagittal plane with 1 mm³ voxels and an anatomical volume that covered the whole brain. Magnetic resonance images (MRIs) were visually analysed by a neurologist to ensure that no brain lesion or malformation was present.

The methodology of tracer production, scan acquisition and data pre-processing was the same as previously described [15]. To summarize, [¹⁸F]MPPF was acquired with a CTI Exact HR+ scanner for 60 min after the injection of 186 \pm 24 MBq of [¹⁸F]MPPF. Specific activity ranged between 37 and 111 GBq/ μ mol [16]. Sinograms were normalized, attenuated, scatter corrected and then reconstructed with filtered backprojection (Hanning filter: cutoff, 0.5 cycle/voxel). This yielded a dynamic set of 35 volumes of 128 \times 128 \times 63 voxels with a voxel size of 2.04 \times 2.04 \times 2.42 mm³. All PET acquisitions were performed during the afternoon, and the patient's level of vigilance was supervised throughout the entire PET acquisition to avoid somnolence or sleep.

Parametric images of binding potential (BP_{ND} [non displaceable], according to consensus nomenclature [17]) values were obtained using a simplified reference tissue model (SRTM) [18] previously validated by our group for [¹⁸F]MPPF studies [19]. Cerebellar white matter, which is assumed to be devoid of 5-HT_{1A} specific binding [20], was used as a reference region [19]. Parametric images of BP_{ND} were transformed into a standard stereotaxic space (MNI template of the ICBM Project, [21]) using Statistical Parametric Mapping (SPM2, Wellcome Trust Centre for Neuroimaging, UCL, London, UK; <http://www.fil.ion.ucl.ac.uk/spm/>). Normalized BP_{ND} images were then smoothed using an 8 \times 8 \times 8 mm FWHM isotropic Gaussian kernel [22].

The BP_{ND} global values were extracted for all subjects using SPM and were compared among C/C, C/G and G/G subgroups using an ANOVA and the Statistical Pro-

gram for the Social Sciences (SPSS, version 12). The significance threshold was set at $p < 0.05$.

We searched for possible statistical differences between BP_{ND} images according to C(-1019)G 5-HT_{1A} promoter functional polymorphism using the linear model at each and every voxel [23]. Given that all subjects are healthy volunteers, we hypothesize an invariant residual variance between groups. All analyses were performed using SPM2 on the normalized smoothed parametric BP_{ND} images. We chose an "ANCOVA by condition" design matrix, an explicit mask that includes the whole brain and brainstem, and uses global BP as a co-variable of no interest.

To further address the potential confounding role of gender, we performed subanalyses of the 23 women and 12 men, separately. Age was considered as a co-variable of no interest. We retained clusters with a threshold of $p < 0.001$ uncorrected at the voxel level, and a corrected threshold of $p < 0.05$ at the cluster level after SPM standard correction for multiple comparisons.

We further analysed [¹⁸F]MPPF BP_{ND} in the dorsal and median raphe nuclei using a region of interest (ROI) delineated on the average [¹⁸F]MPPF BP_{ND} image obtained from the normalized scans of our subjects by setting the threshold activity at 90% of the local maximum in the brainstem. The ROI was then displayed on the MRI template to verify its proper location in the periaqueducal grey matter of the brainstem. This ROI extended on the 13 consecutive slices displaying the raphe, with a total volume of 1400 mm³. For each subject, ROIs were then applied on normalized and smoothed parametric BP_{ND} images to extract a mean BP_{ND} value for this ROI. The mean BP_{ND} values of raphe were compared among C/C, C/G and G/G subgroups in the total population, as well as in women and men separately, using an ANOVA and SPSS (version 12). The global BP_{ND} values and age were considered as co-variables of no-interest. The significance threshold was set at $p < 0.05$.

In order to rule out that our findings were influenced by the previously demonstrated association between 5-HTTLPR polymorphism and [¹⁸F]MPPF BP_{ND} [3], we reprocessed all above analyses after excluding the eight subjects who were homozygote carriers of the S allele (four men and four women).

Results

All of our 35 healthy subjects (12 men and 23 women) were Caucasian. The allele frequencies of C(-1019)G 5-HT_{1A} promoter polymorphisms were comparable to those of others studies with European subjects; 38.6% with the G allele, 61.4% with the C allele, and three individuals (8.57%) homozygous for the G allele [11,13]. Accordingly, the genotype distribution (see table 1) was

in Hardy-Weinberg equilibrium ($\chi^2 = 2.48$; $df = 1$, $p = 0.11$). Regarding 5-HTTLPR polymorphism, homozygote carriers of the S allele were distributed as follows: two among the C/C group, six among the C/G group and none among the G/G group.

There was no difference in the mean global BP_{ND} between the various allelic subgroups (C/C group: mean \pm SD = 0.52 ± 0.09 ; C/G group: mean \pm SD = 0.58 ± 0.17 ; G/G group: mean \pm SD = 0.48 ± 0.13 ; $p = 0.7$), nor any significant influence of gender ($p = 0.1$).

SPM analyses

When considering the whole sample of 35 subjects or the subgroup of 12 men, no significant difference in [¹⁸F]MPPF BP_{ND} was observed between the three genotypes of C(-1019)G 5-HT_{1A} promoter polymorphism (C/C, C/G, G/G).

In contrast, when the analysis was restricted to the subgroup of 23 women, we found significantly greater regional [¹⁸F]MPPF BP_{ND} in homozygous carriers for the G allele compared to C/C and C/G individuals, while no difference was observed between these two latter populations. Differences between G/G and C/C subjects were observed in the anterior portion of the left superior and middle frontal gyri ($p_{corrected} = 0.042$) as well as over the right and left orbitofrontal cortex ($p_{corrected} = 0.001$) (see table 2), whereas differences between G/G and C/G individuals were found in the right and left mesial frontal pole ($p_{corrected} < 0.001$), the anterior aspect of the right middle and inferior temporal gyri ($p_{corrected} = 0.004$), the right orbitofrontal cortex ($p_{corrected} = 0.014$) and the right frontal dorsolateral cortex ($p_{corrected} = 0.007$) (see additional files 1 and 2). The same significant clusters were observed when women with C/G and C/C genotypes were combined and compared with the G/G group (see figure 1 and table 2).

Reprocessing the above analyses after exclusion of the eight homozygote carriers for the S allele of the 5-HTTLPR polymorphism only slightly modified our findings. Indeed, only the subgroup of 19 women demonstrated significant differences in [¹⁸F]MPPF BP_{ND} in relation to C(-1019)G 5-HT_{1A} promoter polymorphism, with greater BP_{ND} for those with G/G compared to those with C/C and C/G (see table 3). Significant clusters affected the same brain regions as those described above, but were more extensive and included the bulbar serotonergic nuclei ($p_{corrected} = 0.021$) (see figure 2).

ROI analysis of the dorsal and median raphe nuclei

We failed to identify an association between C(-1019)G 5-HT_{1A} promoter polymorphism and [¹⁸F]MPPF BP_{ND} in the dorsal and median raphe, even when the analysis was restricted to women, and also after excluding homozy-

Table 1: C(-1019)G 5-HT_{1A} promoter polymorphism distribution.

C(-1019)G 5-HT _{1A} promoter polymorphism	C/C	C/G	G/G	Total
Number of subjects (% of population)	11 (31.4%)	21 (60%)	3 (8.6%)	35 (100%)
% of women	54.5%	71.43%	66.7%	65.7%
Mean age ± SD	43.9 ± 14.4	44.1 ± 12.6	43.3 ± 10	44 ± 12.7
Number of subjects with S/S genotype (%)	2 (18.2%)	6 (28.6%)	0	8 (22.9%)

gous carriers for the S allele for 5-HTTLPR polymorphism (see table 4).

Discussion

In this PET study, no clear cut association was identified between C(-1019)G 5-HT_{1A} promoter functional polymorphism and [¹⁸F]MPPF/5-HT_{1A} receptor binding. This negative finding could reflect an unsatisfactory statistical power. However it should be stressed that the primary analysis upon which this conclusion is drawn contrasted

21 subjects with C/G genotype and 11 subjects with C/C genotype, in accordance with the general empiric consensus that neuroimaging studies that include groups of 12 subjects benefit from adequate statistical power. The 9 additional subjects with C/G genotype are likely to compensate the marginally reduced statistical power related to the 11 subjects in the C/C group. Overall, we believe that the statistical power of our main negative findings, though necessarily uncertain, is fully consistent with that used in the great majority of PET studies worldwide.

Table 2: SPM analyses performed in the subgroup of 23 women. k is the cluster size expressed in voxels.

23 women			
contrast	anatomic brain regions covered	MNI coordinates (x, y, z (mm))	Z score, k, p
GG-CC	left anterior superior and middle frontal gyri (F1 and F2)	-16; 16; 52	Z = 4.48, k = 239, p = 0.042*
	right and left orbitofrontal cortex	22; 58; -12	Z = 4.31, k = 550, p = 0.001*
GG-CG	right and left mesial frontal pole	4; 62; 8	Z = 5.04, k = 1884, p < 0.001*
	right anterior second and third temporal cortex (T2, T3)	60; -22; -18	Z = 4.61, k = 416, p = 0.004*
	right orbitofrontal cortex	28; 40; -18	Z = 4.48, k = 313, p = 0.014*
	right dorsolateral frontal cortex	44; 38; 26	Z = 3.94, k = 365, p = 0.007*
CC-GG		NS	
CC-CG		NS	
CG-CC		NS	
CG-GG		NS	
GG-(CG+CC)	right and left mesial frontal pole	4; 62; 8	Z = 4.79, k = 1407, p < 0.001*
	right anterior second and third temporal cortex (T2, T3)	60; -22; -18	Z = 4.52, k = 283, p = 0.022*
	left anterior superior and middle frontal gyri (F1 and F2)	-16; 16; 52	Z = 4.35, k = 253, p = 0.034*
	right orbitofrontal cortex	28; 40; -18	Z = 4.29, k = 298, p = 0.018*
	right dorsolateral frontal cortex	44; 38; 26	Z = 3.92, k = 324, p = 0.012*
	left anterior inferior frontal gyrus (F3)	-46; 40; 4	Z = 3.74, k = 312, p = 0.015*
(CG+CC)-GG		NS	

NS: no significant. Only significant findings are shown.

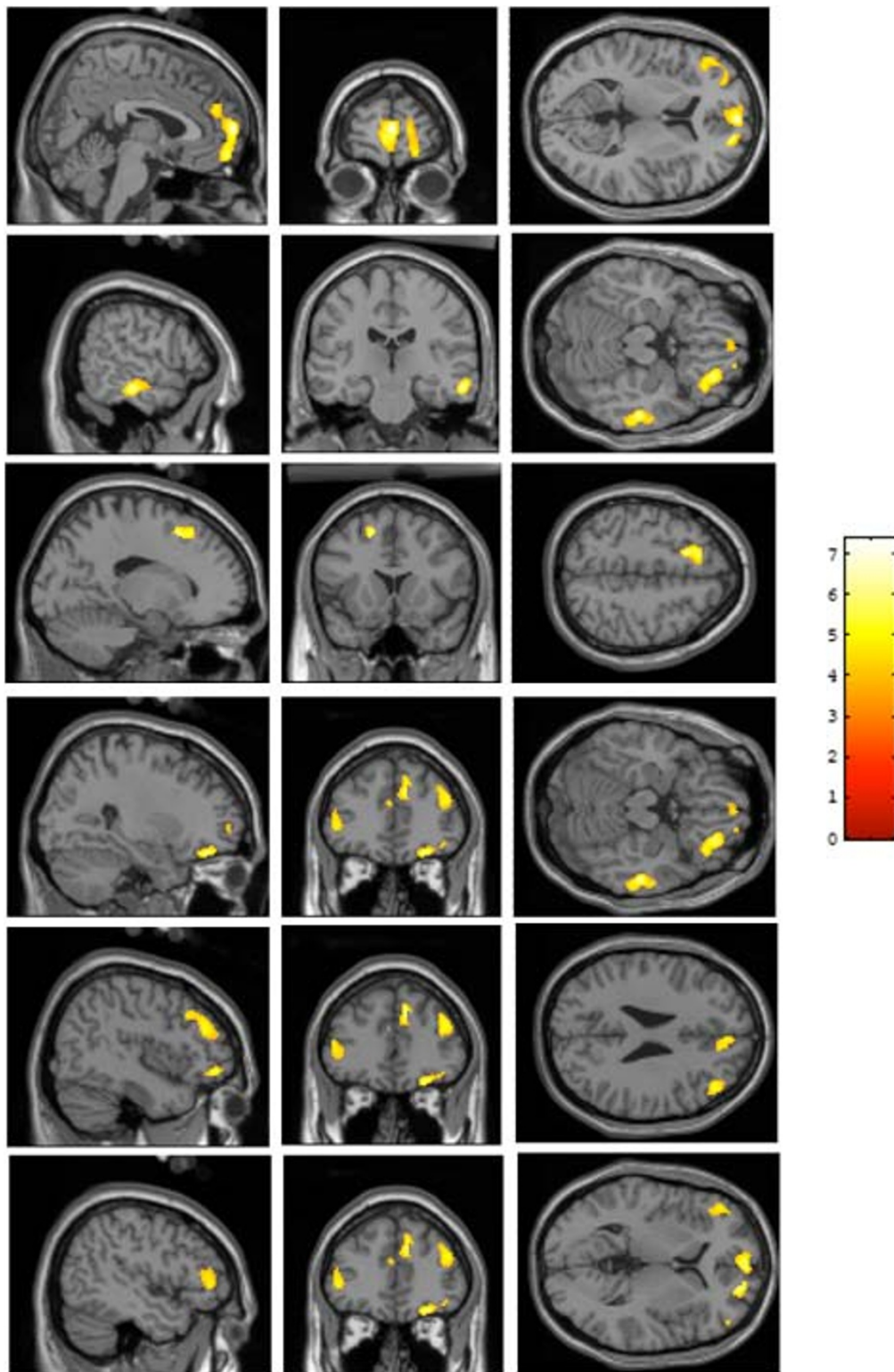


Figure 1 SPM analysis of 23 women demonstrating differences between G/G genotype and C/G and C/C genotypes. Women with G/G genotype demonstrated greater [¹⁸F]MPPF BP_{ND} than women with C/G and C/C genotypes in the right and left mesial frontal pole, the right second and third temporal cortex (T2, T3), the left superior and middle frontal gyri (F1 and F2), the right orbitofrontal cortex, the right dorsolateral frontal cortex and the left inferior frontal gyrus (F3). All displayed regions had a height threshold at $p_{\text{corrected}} < 0.05$ at the cluster level after correction for multiple comparisons. Colour scale: Z score.

Table 3: SPM analyses performed in the subgroup of 19 women after the exclusion of the homozygote carriers of the S allele of the 5-HTTLPR polymorphism.

19 women			
contrast	Anatomic brain regions covered	MNI coordinates (x, y, z (mm))	Z score, k, p
GG-CC	bulbar serotonergic nuclei	0; -22; -46	Z = 4.75, k = 244, p = 0.021*
	left superior and middle frontal gyri (F1 and F2)	-16; 18; 50	Z = 4.73, k = 480, p = 0.001*
	right mesial frontal and left supplementary motor area	2; -14; 58	Z = 4.55, k = 885, p < 0.001*
	left and right mesial frontal pole	-2; 60; -2	Z = 4.52, k = 646, p < 0.001*
	left lateral middle temporal cortex (T2)	-58; -14; -26	Z = 4.20, k = 198, p = 0.048*
	right anterior mesial frontal	12; 36; 38	Z = 4.12, k = 247, p = 0.020*
	left anterior inferior frontal gyrus (F3)	-46; 42; 6	Z = 3.66, k = 298, p = 0.009*
GG-CG	right and left mesial frontal pole	4; 62; 10	Z = 5.14, k = 3248, p < 0.001*
	right lateral orbitofrontal cortex	26; -38; -20	Z = 4.95, k = 357, p = 0.003*
	right parahippocampal gyrus	38; -16; -26	Z = 4.87, k = 273, p = 0.013*
	right temporal pole	30; 14; -38	Z = 4.75, k = 574, p < 0.001*
	right lateral second and third temporal cortex (T2, T3)	60; -22; -16	Z = 4.53, k = 545, p < 0.001*
	left lateral second and third temporal cortex (T2, T3)	-60; -12; -24	Z = 4.45, k = 383, p = 0.002*
	left temporal pole	-34; 10; -40	Z = 4.16, k = 393, p = 0.002*
	right anterior superior and middle frontal gyri (F1, F2)	-14; 26; 52	Z = 4.05, k = 214, p = 0.036*
	right frontal operculum	52; 14; 6	Z = 3.97, k = 294, p = 0.009*
	left anterior inferior frontal gyrus (F3)	-42; 28; -2	Z = 3.96, k = 501, p < 0.001*
	right dorsolateral frontal cortex	42; 36; 30	Z = 3.83, k = 373, p = 0.003*
CC-GG		NS	
CC-CG		NS	
CG-CC		NS	
CG-GG		NS	
GG - (GC+CC)	left and right mesial frontal pole	-2; 60; -2	Z = 4.92, k = 2877, p < 0.001*
	right lateral orbitofrontal cortex	26; -38; -20	
	right temporal pole	30; 14; -38	Z = 4.56, k = 215, p = 0.035*
	left superior and middle frontal gyri (F1, F2)	-16; 20; 50	Z = 4.49, k = 411, p = 0.002*
	right lateral second and third temporal cortex (T2, T3)	60; -22; -16	Z = 4.43, k = 342, p = 0.004*
	left lateral middle temporal cortex (T2)	-58; -12; -24	Z = 4.37, k = 321, p = 0.006*
	left superior frontal gyrus (F1)	-42; 0; 42	Z = 4.22, k = 212, p = 0.037*
	right frontal operculum	54; 12; 6	Z = 3.88, k = 234, p = 0.025*
	left anterior inferior frontal gyrus (F3)	-42; 28; -2	Z = 3.87, k = 469, p = 0.001*
	right dorsolateral frontal cortex	44; 38; 26	Z = 3.82, k = 368, p = 0.003*
(GC+CC) - GG		NS	

k is the cluster size expressed in voxels. Only significant findings are shown. NS: no significant.

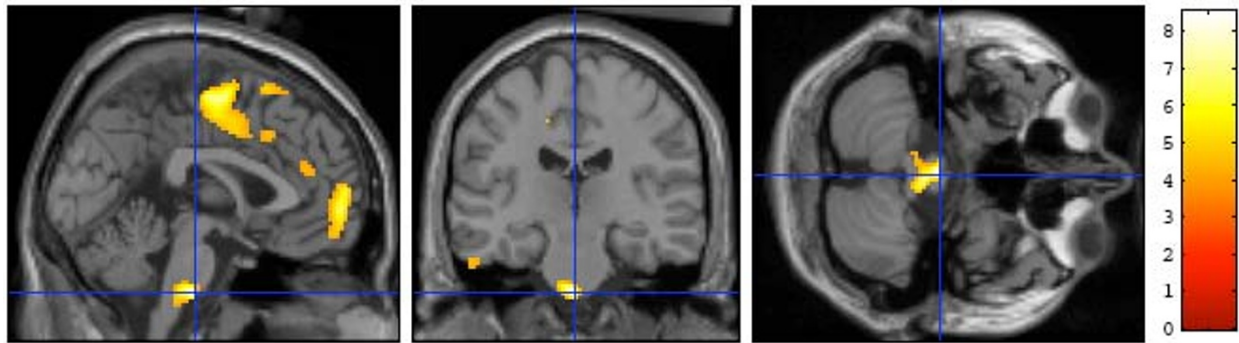


Figure 2 SPM analysis performed after exclusion of homozygote carriers for the S allele of the 5-HTTLPR polymorphism. Of the subgroup of 19 women analysed, a comparison of the G/G and C/C genotypes demonstrated comparable findings to those illustrated in figure one, with an additional significant cluster over the bulbar serotonergic nuclei. Colour scale: Z score.

The women homozygote carriers for the G allele appeared to demonstrate greater [^{18}F]MPPF BP_{ND} in various frontal and temporal brain regions than those carrying at least one C allele. However, the significance of this latter finding, which was shown to be independent of the previously reported association between 5-HTTLPR polymorphism and [^{18}F]MPPF BP_{ND} in women, remains uncertain, due to the small number of individuals with a G/G genotype. Indeed, only three of our 35 healthy subjects (9%), including two women, were homozygous for the G allele, a figure consistent with the 8-10% prevalence of this genotype in the general population. This small number of subjects carries the risk of spurious PET findings, despite the strong statistical significance of our SPM analysis. It must be stressed that there is no easy solution to this limitation. The number of controls who can be scanned in any given PET centre is constrained by ethical issues, providing little justification to study larger populations than those reported here. Conversely, mixing data from healthy controls with those from patients suffering from various psychiatric disorders, reported in previous studies [12,13], makes it impossible to identify the direct effect of genetic polymorphism from that of its associated pathologies. An alternative for a future study would be to first screen the C(-1019)G 5-HT $_{1A}$ promoter polymorphism in a sufficiently large series of normal subjects in order to select an appropriate number of subjects homozygote for the G allele who will then undertake a [^{18}F]MPPF PET study.

There is still very few data regarding the functional impact of C(-1019)G 5-HT $_{1A}$ promoter polymorphism on the serotonergic system. Direct assessment of this polymorphism in rodents is made difficult by the fact that it is not present in rat or mouse genes. However, the G(-1019) allele was shown to abolish the repression of 5-HT $_{1A}$ autoreceptor transcription mediated in the raphe nuclei by NUDR *in vitro* [11]. The resulting over-expression of 5-HT $_{1A}$ autoreceptors should lead to a reduction of 5-HT release and a possible homeostatic over-expression of post-synaptic 5-HT $_{1A}$ receptors [12]. However, not all studies support this view. In particular, the mRNA expression and protein density of 5-HT $_{1A}$ post-synaptic receptors were shown not to respond to a reduced 5-HT concentration following lesion of the raphe or administration of PCPA [24,25]. Moreover NUDR can act as a repressor or an enhancer, depending on cell type and promoter sequence [26,27]. In particular, it was found that NUDR enhances rather than represses 5-HT $_{1A}$ transcriptional activity in hippocampal and septal cells [11]. Overall, the complex organisation of gene regulation *in vivo*, as well as the possibility of compensatory mechanisms, makes it difficult to draw any firm conclusion regarding the impact of C(-1019)G 5-HT $_{1A}$ promoter polymorphism on 5-HT $_{1A}$ receptor expression in humans.

Three [^{11}C]WAY-100635 PET studies have previously investigated this issue, and have reported discordant results [1,12,13]. Two series included a mixed population

Table 4: Mean [^{18}F]MPPF BP_{ND} values of raphe nuclei.

C (-1019)G 5-HT $_{1A}$ promoter polymorphism		C/C	C/G	G/G
mean $\text{BP}_{\text{ND}} \pm \text{SD}$	women	0.25 \pm 0.07	0.29 \pm 0.13	0.33 \pm 0.22
	men	0.17 \pm 0.03	0.22 \pm 0.04	0.14
	all	0.21 \pm 0.07	0.27 \pm 0.11	0.27 \pm 0.19

of depressed or bipolar patients and healthy subjects, and both found greater [^{11}C]WAY-100635 BP in carriers of at least one G allele compared to the C/C genotype, over the raphe nuclei, the amygdala, and the hippocampus [12,13]. Conversely, the third series, which, like our study, investigated a homogeneous population of normal individuals, failed to detect any association between C(-1019)G 5-HT_{1A} polymorphism and [^{11}C]WAY-100635 BP [1]. The data from these three series also differ in terms of gender distribution, with a greater [^{11}C]WAY-100635 BP reported in women in the two mixed population studies [12,13]. In our studies, gender proved to be a crucial factor regarding the genetic variables that influence [^{18}F]MPPF BP_{ND} which association with 5-HTTLPR and C(-1019)G 5-HT_{1A} polymorphisms were found exclusively in women [3]. Similarly, another PET study demonstrated an association between monoamine oxidase A (MAO-A) polymorphism and [^{11}C]WAY-100635 BP selectively in women [28]. Other preclinical and clinical reports support sexual dimorphism in serotonergic neurotransmission (see for review [29]). In particular, women and men differ in terms of blood and cerebral 5-HT concentration [30,31], and availability of 5-HT_{1A} receptors [15].

Other important methodological issues need to be considered when interpreting available PET data, including age of subjects, data analysis, and the molecular characteristics of ligands. Binding of [^{11}C]WAY-100 635 and [^{18}F]MPPF to 5-HT_{1A} receptor is reported to significantly decline with age, especially in women [32,33,15,34]. We have addressed this issue by incorporating age as a co-variable of no-interest in our analyses, in contrast to most previous studies which have failed to address this or provide information regarding the age distribution in each genotype subgroups. It should also be noted that we searched for differences between groups at each and every voxel using SPM analysis, in contrast to previous studies which have solely used different sets of predefined ROIs. However, the main difference between our study and previous series lies in the molecular characteristics of [^{18}F]MPPF compared to [^{11}C]WAY-100 635. Specifically, [^{18}F]MPPF exhibits a relatively low affinity for 5-HT_{1A} receptors, comparable to that of endogenous 5-HT, and appears to selectively bind to externalized receptors [8], whereas [^{11}C]WAY-100 635 demonstrates greater affinity and a non-selective binding to both internalized and externalized receptors [35]. These differences may make [^{18}F]MPPF more sensitive than [^{11}C]WAY-100 635 to the extracellular concentration of 5-HT, as suggested in rodents [6]. In particular, [^{18}F]MPPF BP_{ND} might increase as a result of decreased 5-HT release [36]. Accordingly, the greater [^{18}F]MPPF BP_{ND} observed in healthy women homozygote carriers for the G allele, if confirmed, could

reflect the downstream consequences of an increased expression of 5-HT_{1A} autoreceptors in the raphe nuclei, i.e. a decreased release of 5-HT as well as a subsequent increased expression of post-synaptic 5-HT_{1A} receptors. However, the lack of clear-cut changes in [^{18}F]MPPF BP_{ND} over the dorsal and median raphe nuclei does not support such a mechanism.

An original aspect of our study was to take into account both 5-HTTLPR and C(-1019)G 5-HT_{1A} promoter polymorphisms, and to ensure that any effect of the latter on [^{18}F]MPPF BP_{ND} was not due to an imbalanced distribution of 5-HTTLPR alleles among the different groups considered. Interestingly, while both polymorphisms are associated with common features regarding [^{18}F]MPPF BP_{ND} (same gender specificity and greater [^{18}F]MPPF BP_{ND} in subjects with supposedly lower extracellular concentration of 5-HT), these were observed in distinct brain regions. Whereas differences in [^{18}F]MPPF BP_{ND} associated with 5-HTTLPR polymorphism were previously reported predominately over paralimbic regions (parahippocampal, orbitofrontal, insula, cingulate) [3], [^{18}F]MPPF BP_{ND} associated with C(-1019)G 5-HT_{1A} promoter polymorphism, was primarily localised to the frontal and temporal neocortex in this study. These distinctive patterns might reflect the involvement of specific serotonergic projection pathways.

Overall, our study failed to demonstrate any significant association between C(-1019)G 5-HT_{1A} promoter polymorphism and regional distribution of [^{18}F]MPPF BP_{ND} in our entire sample. This negative finding was also observed in C/C and C/G women but our data suggest that the small number of women homozygote carriers for the G allele display greater [^{18}F]MPPF BP_{ND} relative to other individuals. Confirmation of this latter finding, together with the previous studies of 5-HTTLPR polymorphism, indicates that these two polymorphic regions are relevant co-variables of age and gender, which should be considered for future [^{18}F]MPPF studies in normal individuals as well as patients.

Additional material

Additional file 1 Plot of the [^{18}F]MPPF BP_{ND} values of 23 women at the peak voxel of the significant cluster in the left superior and middle frontal gyri (a) and in the right and left orbitofrontal cortex (b). The first six scans correspond to the women with C/C genotype, the scan number 7 to 21 represent the 15 women with C/G genotype and the two last scans represent the two women with G/G genotype.

Additional file 2 Plot of the [^{18}F]MPPF BP_{ND} values of 23 women at the peak voxel of the significant cluster in the right and left mesial frontal pole (a) and in the right second and third temporal cortex (b). The first six scans correspond to the women with C/C genotype, the scan number 7 to 21 represent the 15 women with C/G genotype and the two last scans represent the two women with G/G genotype.

Competing interests

The authors declare that they have no competing interests.

Authors' contributions

AL coordinated the study. FL participated to the execution of the study. CB carried out the genotype analyses. MA participated to the [¹⁸F]MPPF radiosynthesis. AL, NC and SB processed and analyzed the PET data. AL, NC, PG, and PR interpreted the results. AL, PG and PR drafted the manuscript. All authors read and approved the final manuscript.

Author Details

¹CTRS-IDEE, Lyon, France, ²INSERM U821, University Claude Bernard Lyon 1, INFL, Lyon, France, ³INSERM U675, Faculté Xavier Bichat, University Paris VII, Paris, France, ⁴CERMEP imagerie du vivant, Lyon, France and ⁵Department of Functional Neurology and Epileptology, Hospices Civils de Lyon, France

Received: 11 February 2010 Accepted: 7 July 2010

Published: 7 July 2010

References

- David SP, Murthy NV, Rabiner EA, Munafó MR, Johnstone EC, Jacob R, Walton RT, Grasby PM: **A functional genetic variation of the serotonin (5-HT) transporter affects 5-HT1A receptor binding in humans.** *J Neurosci* 2005, **25**:2586-90.
- Lee M, Bailer UF, Frank GK, Henry SE, Meltzer CC, Price JC, Mathis CA, Putnam KT, Ferrell RE, Hariri AR, Kaye WH: **Relationship of a 5-HT transporter functional polymorphism to 5-HT1A receptor binding in healthy women.** *Mol Psychiatry* 2005, **10**:715-6.
- Lothe A, Boni C, Costes N, Gorwood P, Bouvard S, Le Bars D, Lavenne F, Ryvlin P: **Association between triallelic polymorphism of the serotonin transporter and [18F]MPPF binding potential at 5-HT1A receptors in healthy subjects.** *Neuroimage* 2009, **47**:482-92.
- Zhuang ZP, Kung MP, Chumpradit S, Mu M, Kung HF: **Derivatives of 4-(2'-methoxyphenyl)-1-[2'-(N-2"-pyridinyl-p-iodobenzamido)ethyl]piperazine (p-MPPI) as 5-HT1A ligands.** *J Med Chem* 1994, **37**:4572-5.
- Van Wijngaarden I, Tulp MT, Soudijn W: **The concept of selectivity in 5-HT receptor research.** *Eur J Pharmacol* 1990, **188**:301-12.
- Zimmer L, Mauger G, Le Bars D, Bonmarchand G, Luxen A, Pujol JF: **Effect of endogenous serotonin on the binding of the 5-HT1A PET ligand 18F-MPPF in the rat hippocampus: kinetic beta measurements combined with microdialysis.** *J Neurochem* 2002, **80**:278-86.
- Rbah L, Levie V, Zimmer L: **Displacement of the PET ligand 18F-MPPF by the electrically evoked serotonin release in the rat hippocampus.** *Synapse* 2003, **49**:239-45.
- Zimmer L, Riad M, Rbah L, Belkacem-Kahloul A, Le Bars D, Renaud B, Descarries L: **Toward brain imaging of serotonin 5-HT1A autoreceptor internalization.** *Neuroimage* 2004, **22**:1421-6.
- Wu S, Comings DE: **A common C-1018G polymorphism in the human 5-HT1A receptor gene.** *Psychiatr Genet* 1999, **9**:105-6.
- Albert PR, Lemonde S: **5-HT1A receptors, gene repression, and depression: guilt by association.** *Neuroscientist* 2004, **10**:575-93.
- Lemonde S, Turecki G, Bakish D, Du L, Hrdina PD, Bown CD, Sequeira A, Kushwaha N, Morris SJ, Basak A, Ou XM, Albert PR: **Impaired repression at a 5-hydroxytryptamine 1A receptor gene polymorphism associated with major depression and suicide.** *J Neurosci* 2003, **23**:8788-99.
- Parsey RV, Oquendo MA, Ogden RT, Olvet DM, Simpson N, Huang YY, Van Heertum RL, Arango V, Mann JJ: **Altered serotonin 1A binding in major depression: a [carbonyl-¹¹C]WAY100635 positron emission tomography study.** *Biol Psychiatry* 2006, **59**:106-13.
- Sullivan GM, Ogden RT, Oquendo MA, Kumar JS, Simpson N, Huang YY, Mann JJ, Parsey RV: **Positron emission tomography quantification of serotonin-1A receptor binding in medication-free bipolar depression.** *Biol Psychiatry* 2009, **66**:223-30.
- Hong CJ, Chen TJ, Yu YW, Tsai SJ: **Response to fluoxetine and serotonin 1A receptor (C-1019G) polymorphism in Taiwan Chinese major depressive disorder.** *Pharmacogenomics J* 2006, **6**:27-33.
- Costes N, Merlet I, Ostrowsky K, Faillenot I, Lavenne F, Zimmer L, Ryvlin P, Le Bars D: **A 18F-MPPF PET normative database of 5-HT1A receptor binding in men and women over aging.** *J Nucl Med* 2005, **46**:1980-9.
- Le Bars D, Lemaire C, Ginovart N, Plenevaux A, Aerts J, Brihaye C, Hassoun W, Levie V, Mekhsian P, Weissmann D, Pujol JF, Luxen A, Comar D: **High yield radiosynthesis and preliminary in vivo evaluation of p-[18F]MPPF, a fluoro analog of WAY-100635.** *Nucl Med Biol* 1998, **25**:343-50.
- Innis RB, Cunningham VJ, Delforge J, Fujita M, Gjedde A, Gunn RN, Holden J, Houle S, Huang SC, Ichise M, Iida H, Ito H, Kimura Y, Koeppe RA, Knudsen GM, Knuuti J, Lammertsma AA, Laruelle M, Logan J, Maguire RP, Mintun MA, Morris ED, Parsey R, Price JC, Slifstein M, Sossi V, Suhara T, Votaw JR, Wong DF, Carson RE: **Consensus nomenclature for in vivo imaging of reversibly binding radioligands.** *J Cereb Blood Flow Metab* 2007, **27**:1533-9.
- Gunn RN, Sargent PA, Bench CJ, Rabiner EA, Osman S, Pike VW, Hume SP, Grasby PM, Lammertsma AA: **Tracer kinetic modeling of the 5-HT1A receptor ligand [carbonyl-¹¹C]WAY-100635 for PET.** *Neuroimage* 1998, **8**:426-40.
- Costes N, Merlet I, Zimmer L, Lavenne F, Cinotti L, Delforge J, Luxen A, Pujol JF, Le Bars D: **Modeling [18F]MPPF positron emission tomography kinetics for the determination of 5-hydroxytryptamine(1A) receptor concentration with multiinjection.** *J Cereb Blood Flow Metab* 2002, **22**:753-65.
- Parsey RV, Arango V, Olvet DM, Oquendo MA, Van Heertum RL, John Mann J: **Regional heterogeneity of 5-HT1A receptors in human cerebellum as assessed by positron emission tomography.** *J Cereb Blood Flow Metab* 2005, **25**:785-93.
- Mazziotta J, Toga A, Evans A, Fox P, Lancaster J, Zilles K, Woods R, Paus T, Simpson G, Pike B, Holmes C, Collins L, Thompson P, MacDonald D, Iacoboni M, Schormann T, Amunts K, Palomero-Gallagher N, Geyer S, Parsons L, Narr K, Kabani N, Le Goualher G, Boomsma D, Cannon T, Kawashima R, Mazoyer B: **A probabilistic atlas and reference system for the human brain: International Consortium for Brain Mapping (ICBM).** *Philos Trans R Soc Lond B Biol Sci* 2001, **356**:1293-322.
- Friston KJ, Frith CD, Liddle PF, Frackowiak RSJ: **Comparing functional (PET) images: the assessment of significant changes.** *J Cereb Blood Flow Metab* 1991, **11**:690-9.
- Friston KJ, Holmes AP, Worsley KJ, Poline JB, Frith CD, Frackowiak RSJ: **Statistical parametric maps in functional imaging: a general linear approach.** *Hum Brain Mapp* 1995, **3**:189-210.
- Vergé D, Daval G, Marcinkiewicz M, Patey A, el Mestikawy S, Gozlan H, Hamon M: **Quantitative autoradiography of multiple 5-HT1 receptor subtypes in the brain of control or 5,7-dihydroxytryptamine-treated rats.** *J Neurosci* 1986, **6**:3474-82.
- Pranzatelli MR, Durkin MM, Barkai AI: **Quantitative autoradiography of 5-hydroxytryptamine 1A binding sites in rats with chronic neonatal 5,7-dihydroxytryptamine lesions.** *Brain Res Dev Brain Res* 1994, **80**:1-6.
- Huggenvik JI, Michelson RJ, Collard MW, Ziemba AJ, Gurley P, Mowen KA: **Characterization of a nuclear deformed epidermal autoregulatory factor-1 (DEAF-1)-related (NDR) transcriptional regulator protein.** *Mol Endocrinol* 1998, **12**:1619-39.
- Bottomley MJ, Collard MW, Huggenvik JI, Liu Z, Gibson TJ, Sattler M: **The SAND domain structure defines a novel DNA-binding fold in transcriptional regulation.** *Nat Struct Biol* 2001, **8**:626-33.
- Mickey BJ, Ducci F, Hodgkinson CA, Langenecker SA, Goldman D, Zubieta JK: **Monoamine oxidase A genotype predicts human serotonin 1A receptor availability in vivo.** *J Neurosci* 2008, **28**:11354-9.
- Cosgrove KP, Mazure CM, Staley JK: **Evolving knowledge of sex differences in brain structure, function, and chemistry.** *Biol Psychiatry* 2007, **62**:847-55.
- Nishizawa S, Benkelfat C, Young SN, Leyton M, Mzengeza S, de Montigny C, Blier P, Diksic M: **Differences between males and females in rates of serotonin synthesis in human brain.** *Proc Natl Acad Sci USA* 1997, **94**:5308-13.
- Weiss LA, Abney M, Cook EH Jr, Ober C: **Sex-specific genetic architecture of whole blood serotonin levels.** *Am J Hum Genet* 2005, **76**:33-41.
- Cidis Meltzer C, Drevets WC, Price JC, Mathis CA, Lopresti B, Greer PJ, Villemagne VL, Holt D, Mason NS, Houck PR, Reynolds CF, DeKosky ST: **Gender-specific aging effects on the serotonin 1A receptor.** *Brain Res* 2001, **895**:9-17.
- Tauscher J, Verhoeff NP, Christensen BK, Hussey D, Meyer JH, Kecojevic A, Javanmard M, Kasper S, Kapur S: **Serotonin 5-HT1A receptor binding potential declines with age as measured by [11C]WAY-100635 and PET.** *Neuropsychopharmacology* 2001, **24**:522-30.
- Møller M, Jakobsen S, Gjedde A: **Parametric and regional maps of free serotonin 5HT1A receptor sites in human brain as function of age in healthy humans.** *Neuropsychopharmacology* 2007, **32**:1707-14.

35. Gozlan H, Thibault S, Laporte AM, Lima L, Hamon M: **The selective 5-HT1A antagonist radioligand [3H]WAY 100635 labels both G-protein-coupled and free 5-HT1A receptors in rat brain membranes.** *Eur J Pharmacol* 1995, **288**:173-86.
36. Millet P, Moulin M, Bartoli A, Del Guerra A, Ginovart N, Lemoucheux L, Buono S, Fagret D, Charnay Y, Ibáñez V: **In vivo quantification of 5-HT1A-[18F]MPPF interactions in rats using the YAP-(S)PET scanner and a beta-microprobe.** *Neuroimage* 2008, **41**:823-34.

doi: [10.1186/1744-9081-6-37](https://doi.org/10.1186/1744-9081-6-37)

Cite this article as: Lothe *et al.*, 5-HT1A gene promoter polymorphism and [18F]MPPF binding potential in healthy subjects: a PET study *Behavioral and Brain Functions* 2010, **6**:37

**Submit your next manuscript to BioMed Central
and take full advantage of:**

- Convenient online submission
- Thorough peer review
- No space constraints or color figure charges
- Immediate publication on acceptance
- Inclusion in PubMed, CAS, Scopus and Google Scholar
- Research which is freely available for redistribution

Submit your manuscript at
www.biomedcentral.com/submit

